

30 AND 50 BASIN RD

HAMMONTON, NJ



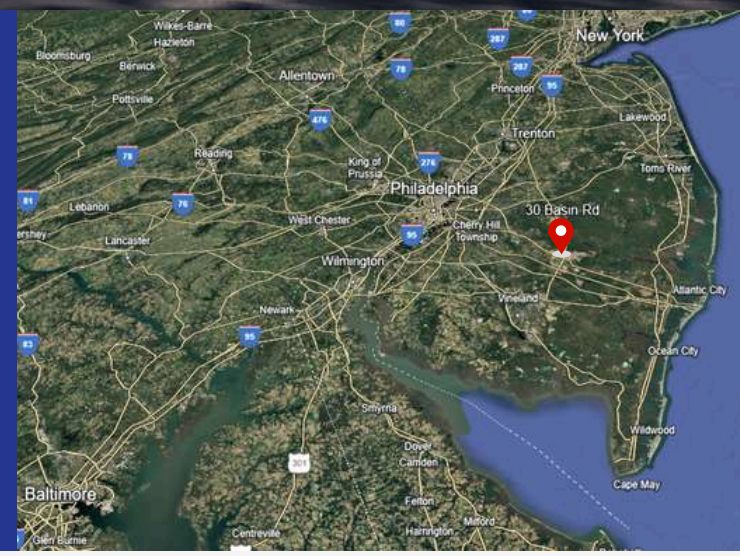
+/- 168,560 SF ON 11.84 ACRES
COMMERCIAL/RETAIL & WAREHOUSE BUILDINGS

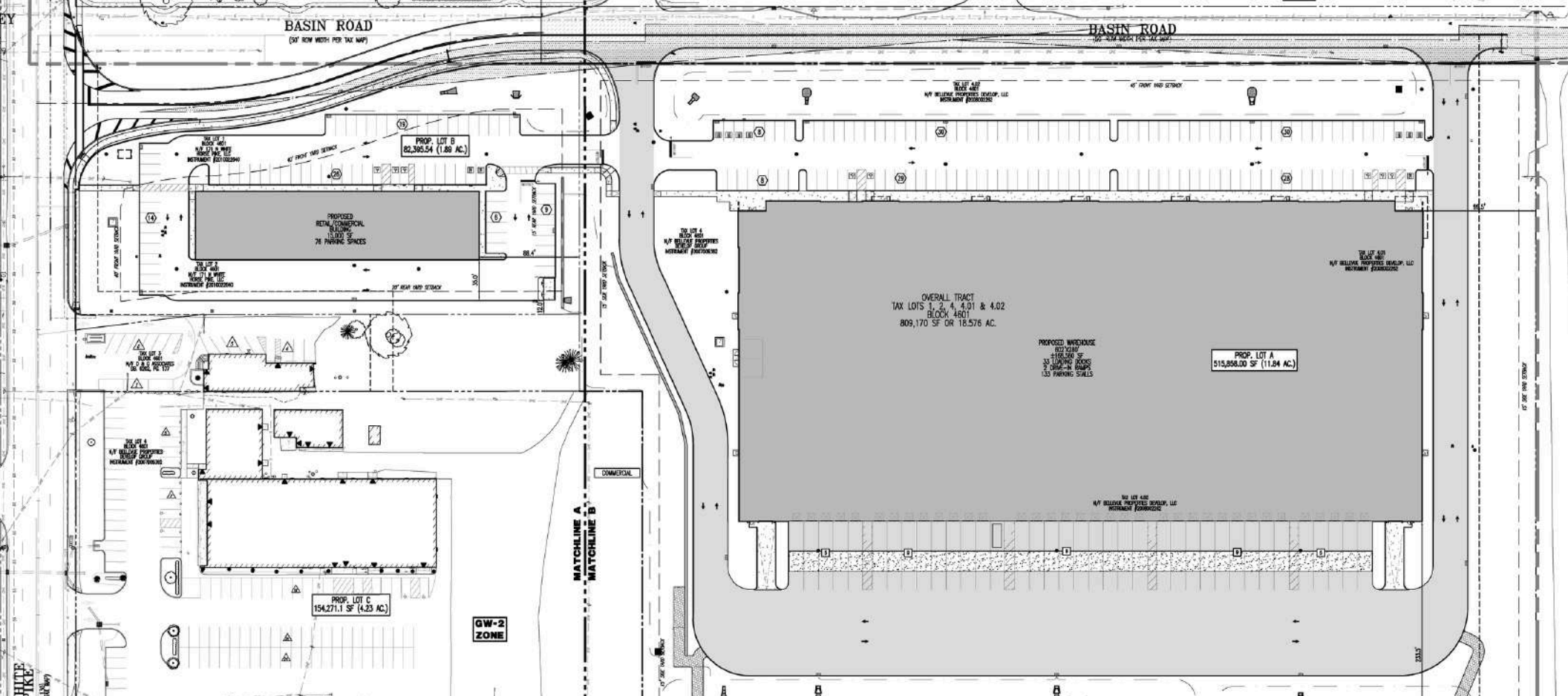
PROPOSED WAREHOUSE FEATURES

- 602' x 280'
- 168,560 SF
- 133 Car Parking Spaces
- 33 Loading Docks
- 2 Drive-In Ramps

COMMERCIAL/RETAIL BUILDING FEATURES

- 15,000 SF Retail/Commercial Building
- 76 Car Parking Spaces





CONTACT US

Greg Rogerson
grogerson@jgpetrucci.com

ASBURY, NEW JERSEY

908.730.6909
171 STATE ROUTE 173, SUITE 201
ASBURY, NJ 08802

BETHLEHEM, PENNSYLVANIA

610.332.0550
22 S. COMMERCE WAY, SUITE 7
BETHLEHEM, PA 18017

WWW.JGPETRUCCI.COM