




FOR LEASE: MEDICAL/OFFICE SPACE

91 N York Road | Willow Grove, PA



PROPERTY FEATURES & DETAILS

- 4,500-9,000 SF Class-A Office/Medical space located on the 2nd floor
- 2 units (can demise)
- Building signage available on a highly trafficked intersection
- Attached parking garage
- Delivery/drop-off lane
- Located in Willow Grove adjacent to SEPTA's Willow Grove Station
- Only 1.5 miles from the PA Turnpike
- Co-Tenants: Jefferson Health - Moss Rehab Institute for Brain Health (MRIBH)
- Brand new mixed-use development with high-end amenities available to tenants (pool, fitness center, business center, courtyard, clubhouse & more)
- Private entrance & separate elevators (off of Davisville Road)

	TRAFFIC COUNT	29.1K
	# OF UNITS	2
	TOTAL SF	9,000 SF

CONTACT

STEVE JEFFRIES

sjeffries@equityretailbrokers.com

DIRECT 484.531.2250

JAKE DOYLE

jdoyle@equityretailbrokers.com

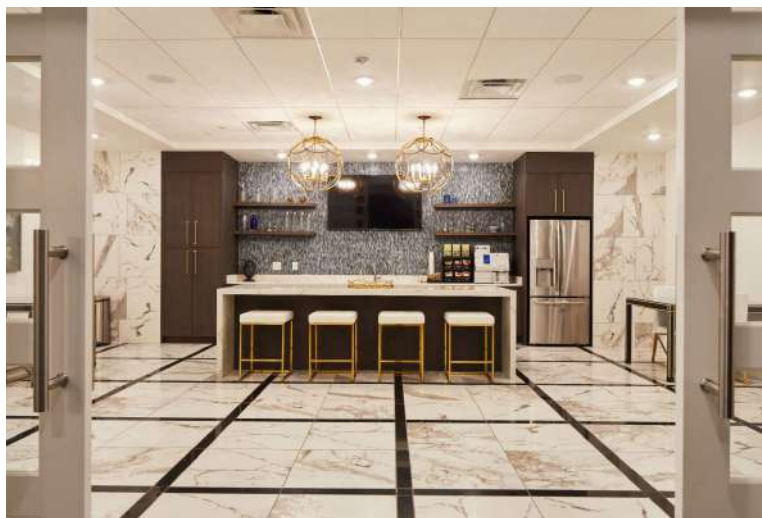
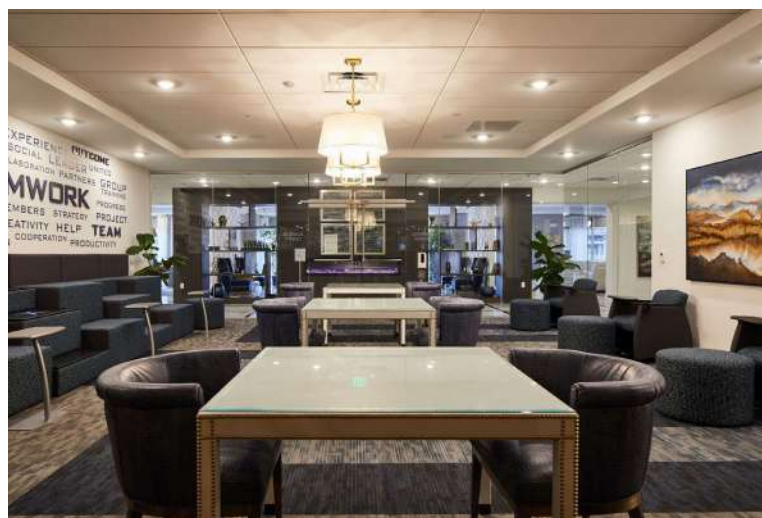
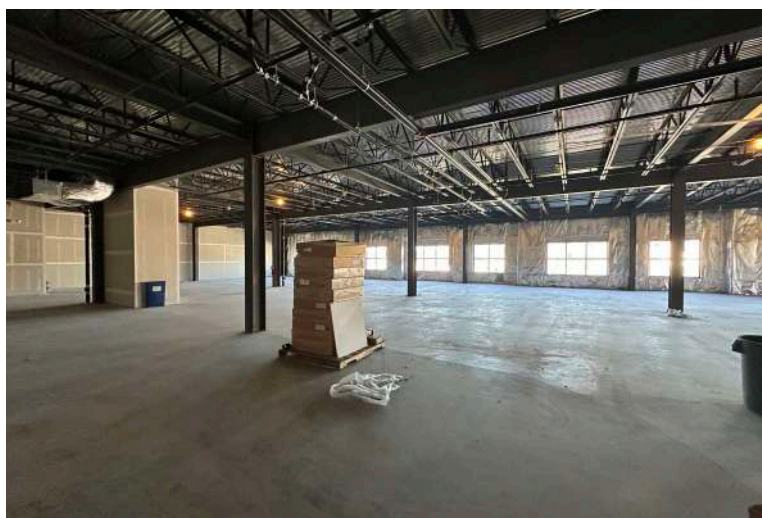
DIRECT 484.531.2176

FOR LEASE: MEDICAL/OFFICE SPACE

91 N York Road | Willow Grove, PA

EQUITY RETAIL BROKERS

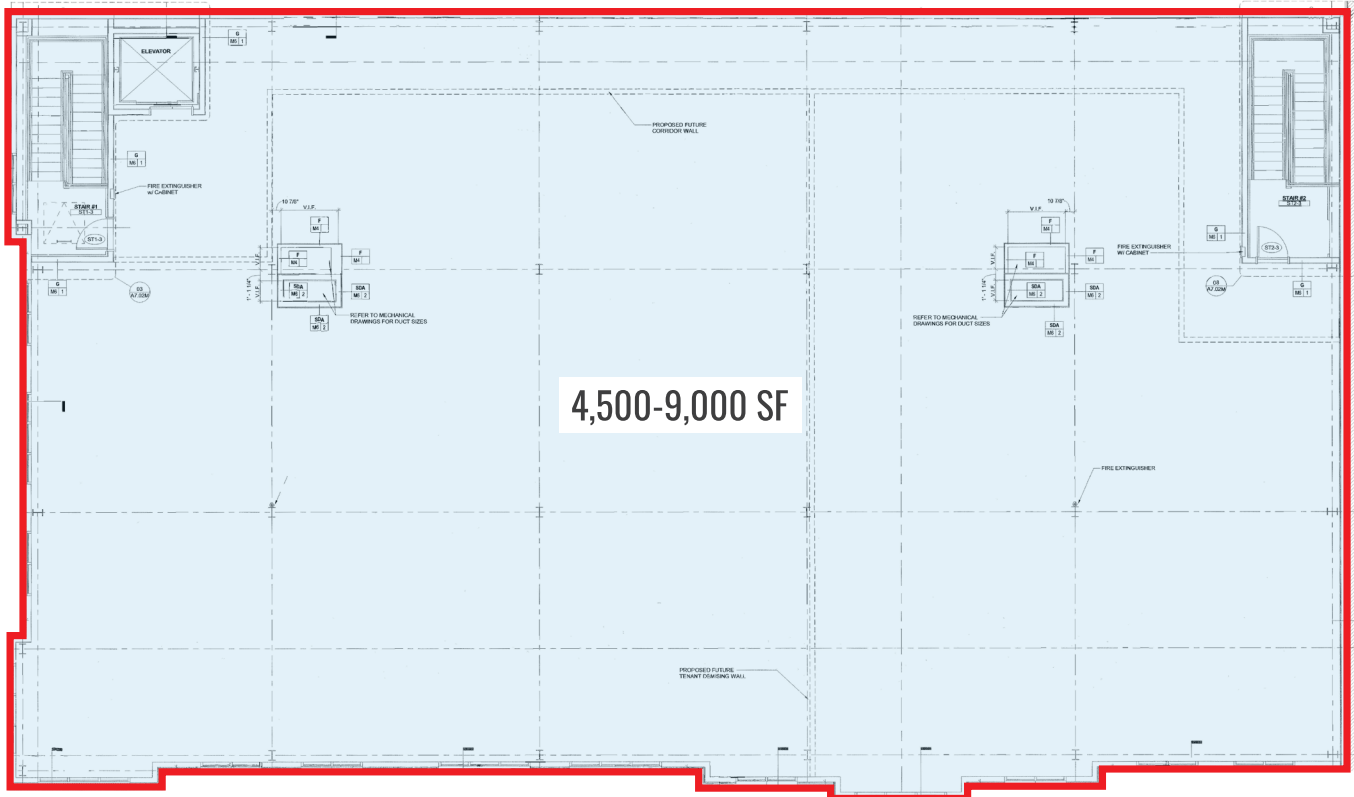
OFFICE SPACE



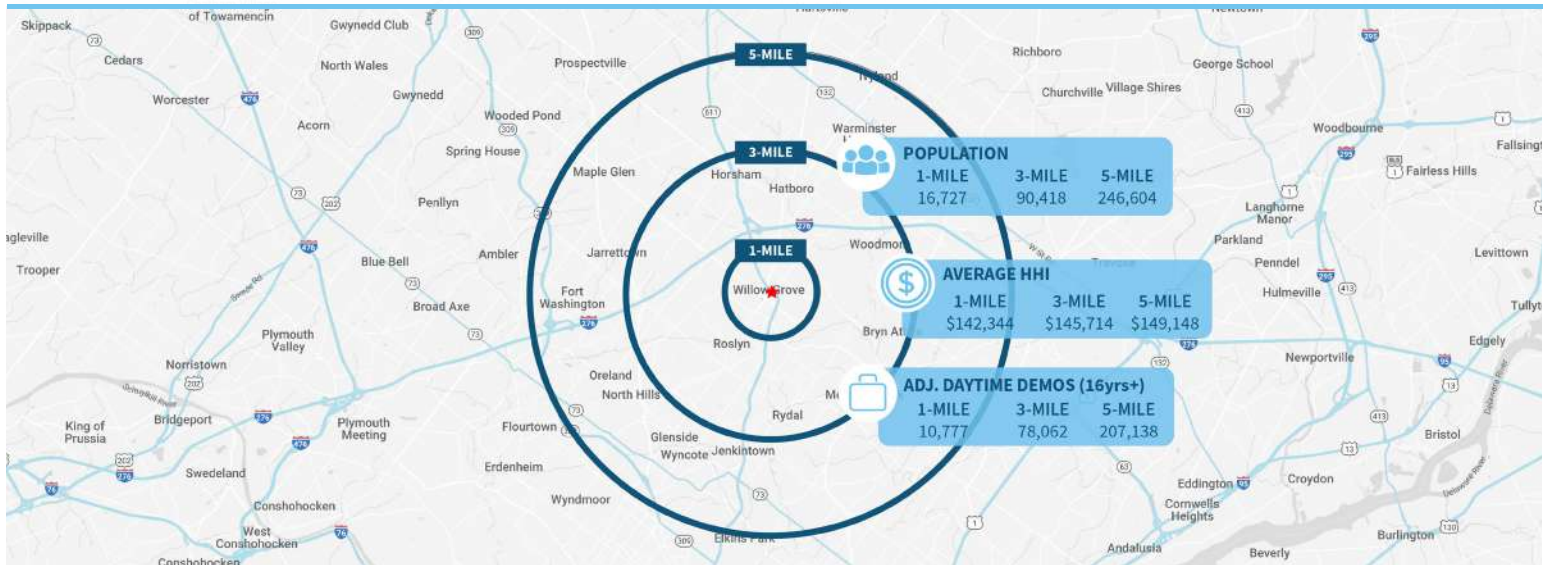
FOR LEASE: MEDICAL/OFFICE SPACE

91 N York Road | Willow Grove, PA

FLOOR PLANS



Demographic Overview (1, 3, 5-mile radius)



The right space. The right move.



Information concerning this offering is from sources deemed reliable but no warranty is made to the accuracy thereof and it is submitted subject to errors, omissions, changes of price or other conditions, prior to sale or lease or withdrawal without notice. Equity Retail Brokers is licensed in PA, NJ, & DE. Steve Jeffries and Jake Doyle are licensed in PA.

RETAIL AERIAL



SITE

bloomingdales SEPHORA
NORDSTROM
rack Apple H&M The Cheesecake Factory
★ macy's Yard House Chick-fil-A
PRIMARK Bath & Body Works
DUNKIN' Foot Locker LOFT
WILLOW GROVE PARK MALL

Compliments of:

EQUITY RETAIL BROKERS

531 W. Germantown Pike, Suite 103 ■ Plymouth Meeting, PA 19462 ■ 610.645.7700 ■ www.equityretailbrokers.com